



OnSite is part of SSI, a member of South Staffordshire Plc

Data Collection

- Flow monitoring time series using depth and velocity measurements
- Level only Event Duration Monitoring
- Pump runtime loggers
- Float switch early flood warnings
- Water quality analytes, including; ammonia, nitrates, dissolved oxygen, conductivity, pH, anionic surfactants and temperature
- Rainfall depth and intensity data from tipping bucket or optical gauges
- Live RADAR rainfall stream
- Wastewater temperature monitoring – heat recovery studies
- Discrete measurement data – spot measurements, independent calibration checks
- All supporting metadata – manhole survey dimensions, site video and photos, location details and safety information

Data Processing

- Data processing is extensively automated, however it is overseen and checked for accuracy and consistency by the OnSite data analysis team
- OnSite monitors data on an agreed timetable and undertakes any client-specific data processing required
- Red flagging of specified changes in data status from a monitoring station, such as heavy rainfall, peaks in flow, or changes in water chemistry
- OnSite administrators can limit access by client, group or data sets, enabling multiple clients to be included within the same data sets without risk of sharing sensitive information
- Graded and approved data

Data Reporting

- Intuitive, easily navigable reporting of data in a wide variety of formats
- Custom dash-boards displaying critical or key information
- Standard, fully scalable maps provide easy visual presentation of monitoring site spread and key local road, rail, waterway proximity
- Mapped site locations feature dropdown data highlights
- Customizable graphs for easy visual comparison of several locations or multiple data streams
- Full range of single and multiple site data tabulated with user-friendly status colour coding
- All information is exportable as tabulated data, graphs, maps in a wide variety of standard formats

01905 340 054 onsite.co.uk/live

01905 340 054

onsite.co.uk/live

OnSite 89 Blackpole West, Blackpole, Worcester WR3 8TJ.

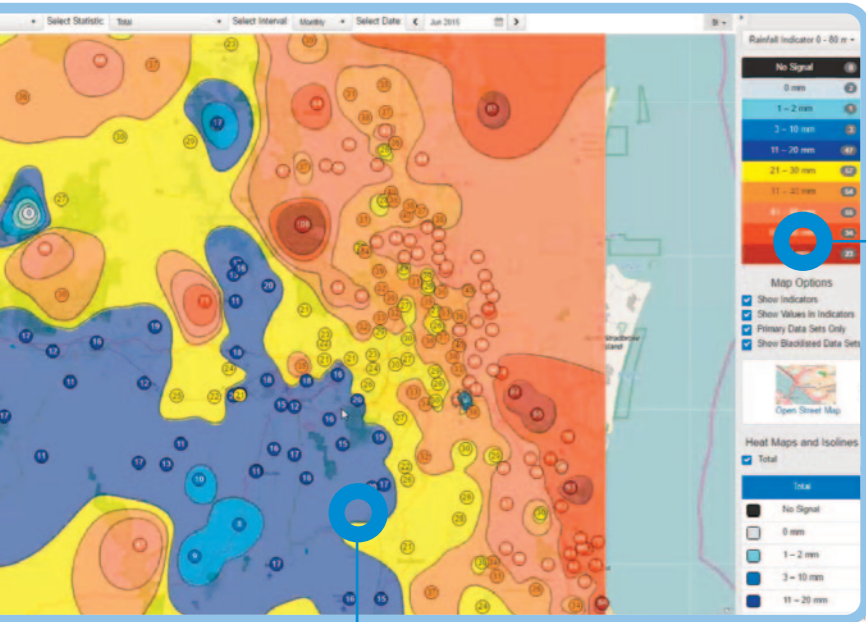
Offices and facilities throughout the UK provide nationwide coverage.

OnSite holds ISO accreditations for 9001, Quality Management; 14001, Environmental Management and; 45001, Occupational Health & Safety Management; as well as a wide range of industry accreditations and approvals.

ISO 9001 ISO 14001 ISO 45001

OnSite Live

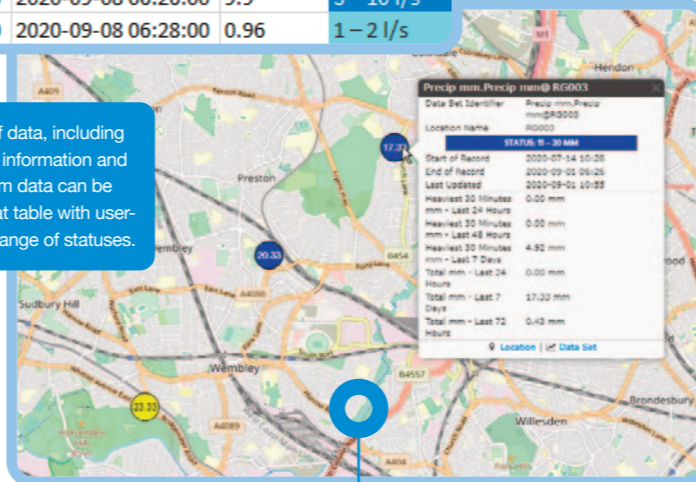
wastewater data management



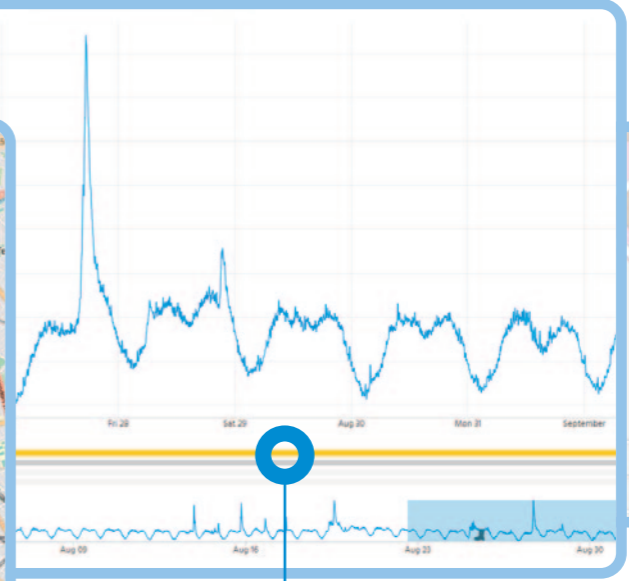
Alerts can be set up for a wide variety of issues, such as peak flows, low flows or pollution markers. Recipient groups can be set up to receive warnings via email or text.

Start of Record	End of Record	Value	Status
Av 2020-07-16 07:58:00	2020-09-08 06:28:00	771.93	> 201 l/s
2020-07-16 02:30:00	2020-09-08 06:06:00	107.82	101 – 200 l/s
2020-07-16 07:46:00	2020-09-08 06:20:00	77.52	61 – 100 l/s
2020-07-16 03:12:00	2020-09-08 06:18:00	40.22	31 – 60 l/s
even 2020-07-16 05:40:00	2020-09-08 06:10:00	21.3	21 – 30 l/s
2020-07-16 03:36:00	2020-09-08 06:26:00	9.9	3 – 10 l/s
2020-08-11 04:30:00	2020-09-08 06:28:00	0.96	1 – 2 l/s

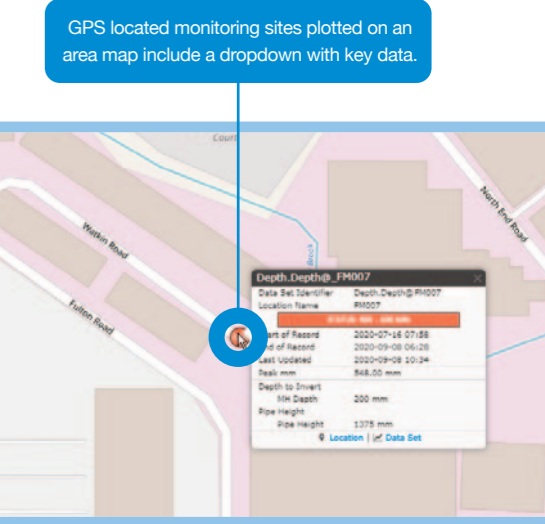
A comprehensive range of data, including single site/multiple stream information and multiple site/single stream data can be displayed in raw data format table with user-friendly colour coding of a range of statuses.



All data, images and mapping are displayable in simple gallery format.



On-screen graph grading and approval of information via 'Data Carpets' enables multiple streams of information to be compared and contrasted in a simple, highly visual format.



GPS located monitoring sites plotted on an area map include a dropdown with key data.

Use of standard fully scaleable web maps ensures user-friendly visual access to the locations and spread of test sites, as well as making it easy to identify the proximity to key features, such as road, rail, waterways and key buildings.

Highly visual, user-friendly colour coded mapping of key local info, such as historic flooding, temperature, topography and rainfall.

OnSiteLive is a revolutionary, fully integrated data capture, analysis, mapping and reporting platform that has been specifically developed for the management of wastewater, sewerage and drainage monitoring. Easy to use, yet incredibly flexible and customisable, OnSiteLive is capable of collecting every datastream that monitoring can provide; from simple rainfall, flow, velocity and depth, through to key information on oxygen levels, clarity, particulates, pH and contaminants essential for monitoring pollution.

OnSiteLive enables users to present key survey data on a tailored home screen providing instant clear, concise graphical information. That data can then be examined further and viewed on maps and graphs to gain valuable insight into the information collected. The data can be exported in all industry standard formats, or fed directly into other management software.

Highly flexible, fully integrated data collection and reporting combined within a simple, intuitive analytics interface.

With its highly visual and fully interactive environment, OnSiteLive speeds up analysis and supports better decision making. Viewable on phone, tablet or PC, OnSiteLive is not only incredibly flexible and customisable, but it can also be utilised as a backend processing facility that interfaces seamlessly with other in-house data monitoring systems.

The modern analytics interface draws together all available data into a single collection, processing and reporting package.

The combination of multiple datastreams into a single, coherent archive enables clients to instantly access a complete spectrum of survey data displayed using a comprehensive range of maps, data grids and charts.

Multiple charts and data sets can be overlaid on a single graph screen to form data 'carpets' that offer a complete instant picture of correlations between events.

Data is viewable on all modern IT platforms.

A key feature of the OnSiteLive system is the ability to set up automated online, email and SMS alerts of flood risks, pollution events, significant changes of flow data and other unusual conditions.

Trigger intervals can also be set for updates during ongoing events. As conditions normalise an 'all clear' alert can also be set.

Alerts are simple to set for key statistics, such as high flow volumes, heavy rain, or changes in water chemistry.

All backend processing and overall system supervision is managed by OnSite, providing clients with simple, worry free information that is viewable and exportable in a comprehensive range of formats.

- Simple to Use
- Intuitive
- Fully Integrated
- Flexible
- Comprehensive

